

The background image shows a serene garden scene. A light-colored stone path leads from the foreground into the distance. To the left, there are large, dark grey rocks and some low-lying plants. In the background, a dense wall of bamboo stands tall. To the right, there are various green plants and a glimpse of a building with a gabled roof. The overall atmosphere is peaceful and natural.

SA YOUTH - Meditation Garden

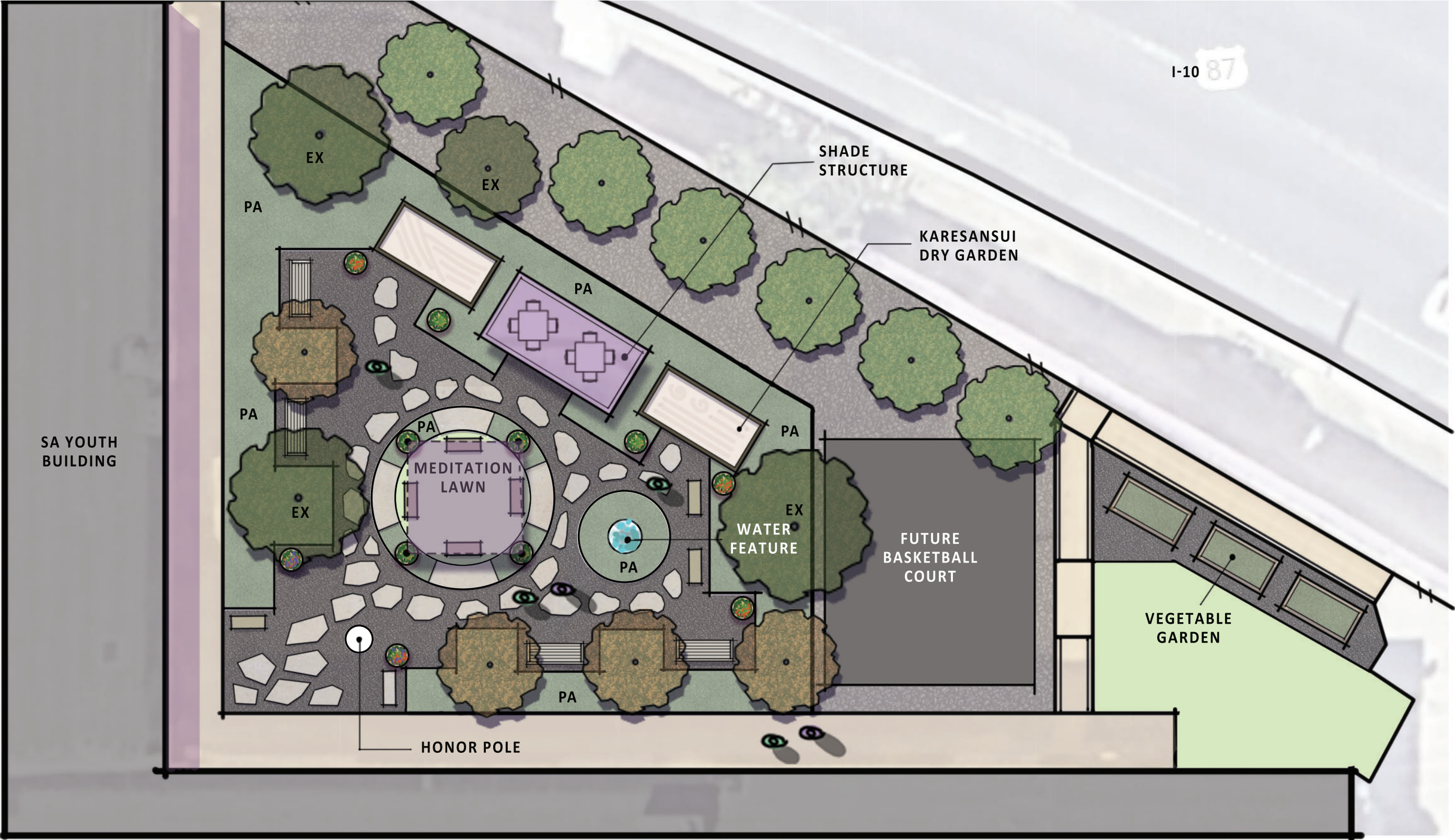
SD Presentation

July 1st, 2025

Garden - *Visioning*



GARDEN - Concept



SCHEMATIC LANDSCAPE MASTERPLAN SA YOUTH COURTYARD

SA YOUTH | 2025 JULY 1ST

SA YOUTH | July 01, 2025 | 



Scale: 1" = 20' - 0"

4039 Broadway Street
San Antonio, TX 78209
210.349.3500
www.kwtexas.com
Building the Exceptional, *Together.*



GARDEN - *Planting*



Texas Mountain Laurel

Latin	<i>Sophora secundiflora</i>
Type	Evergreen Shrub or Small Tree
Bloom Time	February to April
Color	Dark Green Foliage with Purple Blooms
Exposure	Full Sun to Part Shade
Size	Up to 30' but usually 15' Height and 5-15' Width at Maturity
Description	Very popular as a native evergreen ornamental tree within its range, valued for its handsome, dark green foliage and lush early spring blooms.



CRAPE MYRTLE

Latin	<i>Lagerstroemia spp.</i>
Type	Deciduous Tree
Bloom Time	July to September
Color	Light Green Foliage with a Variety of Bloom Colors
Exposure	Full Sun
Size	30' Height and 20' Width at Maturity
Description	Multi-trunked ornamental tree with crepe paper-like flowers.



ESPERANZA

Latin	<i>Tecoma stans</i>
Type	Perennial Shrub
Bloom Time	April to November
Color	Green Foliage with Yellow Blooms
Exposure	Full Sun
Size	10' Height and Width
Description	Trumpet shaped flowers that grow 3"-5" long in clusters, performing best in full sun.



UPRIGHT ROSEMARY

Latin	<i>Rosmarinus officialus</i>
Type	Evergreen Shrub
Bloom Time	Summer
Color	Gray-Green Foliage with Small Blue Flowers
Exposure	Full Sun
Size	2-6' Height and 2-4' Width
Description	A generally upright, rounded, evergreen shrub with aromatic, needle-like, gray-green leaves and tiny, two-lipped, pale blue to white flowers. These plants add ornamental value to borders, herb gardens, patio areas and foundations grown in the ground and/or container.



SILVER PONYFOOT

Latin	<i>Dichondra argentea</i>
Type	Perennial Herb/Groundcover
Bloom Time	April to October
Color	Silver Leaves with White Flowers
Exposure	Sun to Part Shade
Size	4" Height
Description	Silver Ponyfoot is a wonderful ground cover for drought tolerant landscaping. This attractive Texas native plant is an evergreen, disease and pest resistant and will thrive in both full sun and part shade. Works beautiful in pots, where the plant gracefully spills over.

GARDEN - *Planting*



GULF MUHLY GRASS

Latin	<i>Muhlenbergia capillaris</i>
Type	Perennial Grass
Bloom Time	Fall
Color	Yellow Green with Purple Spikelets
Exposure	Full Sun
Size	3’ Height and Width
Description	Large, airy grass with purple/ pink feathery plumes emerging in the fall.



WOOLLY STEMODIA

Latin	<i>Stemodia lanata</i>
Type	Perennial Herb/Groundcover
Bloom Time	April to November
Color	Pale Green Leaves with Lavendar Colored Flowers
Exposure	Full Shade
Size	35’ Height and 20’ Width
Description	Silver, whitish, or greyish plant that is great for the foliage alone. Blooms tiny lavender or white flowers that are best appreciated at close range.









HERBACEOUS PERENNIAL

Mexican Bush Sage

Salvia leucantha

One of the most attractive Salvias, prized for its ornamental and showy velvety flower spikes.

Mature Size	4’ Height & Spread
Color	Gray-Green Foliage with Purple Blooms
Cold Hardiness	0° if soil kept dry.
Sun Exposure	
Water Needs	
Season of Interest	 
Other	 



FOXTAIL FERN

Latin	<i>Asparagus densiflorus</i>
Type	Evergreen Perennial
Bloom Time	Late Spring to Early Summer
Color	Lime Green with Tiny White Blooms
Exposure	Part Shade
Size	2’ Height and 3’ Width
Description	Noted for its dense, fern-like, evergreen foliage that forms an arching mound with outward-sprawling arching stems.



PRIDE OF BARBADOS

Latin	<i>Caesalpinia pulcherrima</i>
Type	Perennial Shrub
Bloom Time	Summer
Color	Pale Green with Orange and Red Blooms
Exposure	Full Sun
Size	6’ Height and Width
Description	Incredibly showy blossoms of orange and red flowers in the summer. Fast growing, heat and drought tolerant.



LANDSCAPE
ARCHITECTS